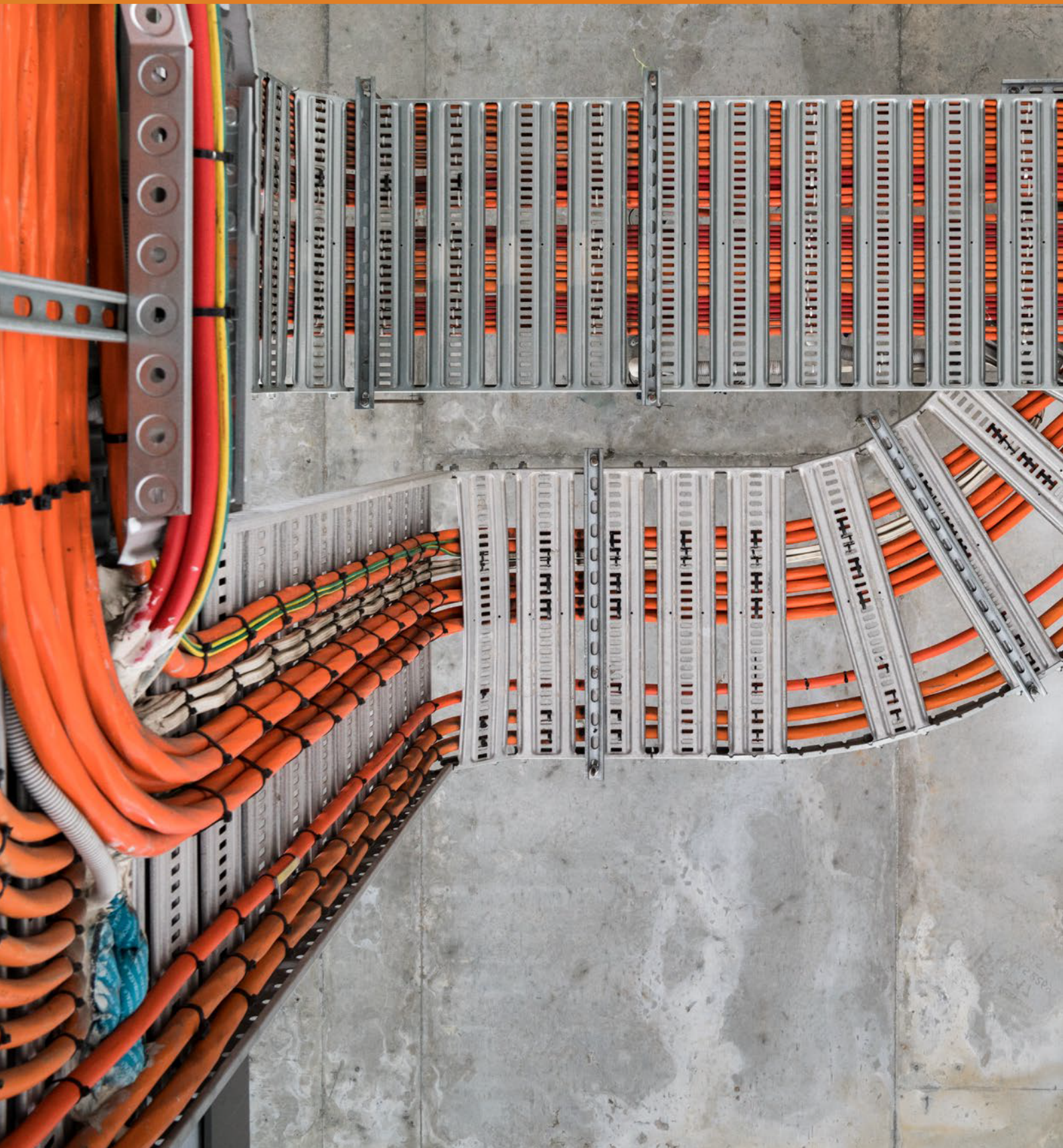




CABLE MANAGEMENT SYSTEMS



DCT PERFORATED CABLE TRAY SYSTEM

Information

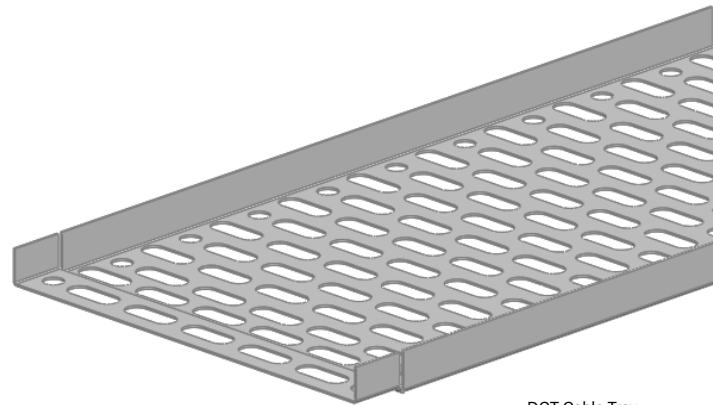
DCT Perforated Cable Tray System is designed for surface mounted cable management.

- Material 0.65mm thick
- 2.4m length
- Self-splicing joggled ends
- 14mm return flange
- 20mm x 8mm continuous perforation

Available Finishes

DCT Perforated Cable Tray System is designed for surface mounted cable management.

- Galvabond
- Powder coated
- Zinc Passivated



DCT Cable Tray

DCT CABLE TRAY ORDERING INFORMATION

Product Code	
DCT7	75mm
DCT10	100mm
DCT15	150mm
DCT23	250mm
DCT30	300mm

Available Finishes	
G	Galvabond
PC	Powder Coated
ZP	Zinc Passivated

Example	Product Code	Finish
DCT23G	DCT23	G

GENERAL DESCRIPTION

Information

DT1 Smart Tray System is designed for trapeze supported or surface mounted cable management and is ideally suited to small to medium size cables such as TPS, data comms and sub mains allowing for more tie off points as well as tighter radius bends and risers. DT1 Smart Tray offers full integration with DT3 Ladder Tray System saving the installer from having to carrying two ranges of accessories.

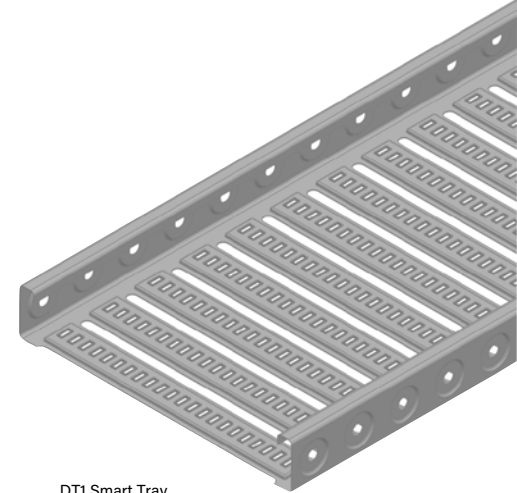
- Material 0.65mm thick
- 3m length
- 50mm Sides
- 45mm cable laying depth
- 11mm tie off centres
- Site fabricated fittings
- Flat and peaked cover option

Available Finishes

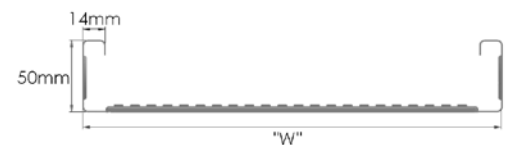
- Galvabond
- Powder coated
- Zinc Passivated

Technical Information

Drillcut Load and Deflection data is derived from tests performed in a NATA certified testing environment in accordance to NEMA VE 1-2009 standards. All Ladders exceed the class designation that has been applied to the product. Load data is based on single spans resulting in worst case scenario. Deflections listed in our table are based on continuous spans, single span installation will result in increased deflection, for single spans multiply the corresponding deflection by 2.5.



DT1 Smart Tray



DT1 Smart Tray Profile

DT1 SMART TRAY ORDERING INFORMATION

Product Code	
DT115	150mm
DT130	300mm
DT145	450mm
DT160	600mm

Available Finishes	
G	Galvabond
PC	Powder Coated
ZP	Zinc Passivated

Example DT130G	Product Code DT130	Finish G
-------------------	-----------------------	-------------

GENERAL DESCRIPTION

Information

DT3 Ladder Tray System is designed for trapeze supported or surface mounted cable management and is ideally suited to small, medium and large size cables such as TPS, data comms, mains & sub mains. DT3 offers full integration with DT1 Ladder Tray System saving the installer from having to carrying two ranges of accessories.

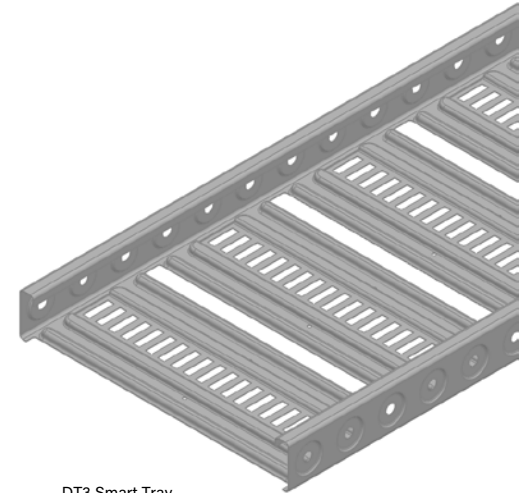
- Material 0.75mm thick
- 3m length
- 50mm Sides
- 40mm cable laying depth
- 20mm tie off centres
- Site fabricated fittings
- Flat and peaked cover option

Available Finishes

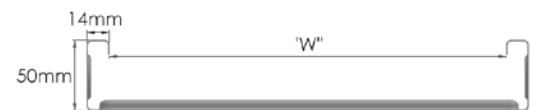
- Galvabond
- Powder coated
- Zinc Passivated

Technical Information

Drillcut Load and Deflection data is derived from tests performed in a NATA certified testing environment in accordance to NEMA VE 1-2009 standards. All Ladders exceed the class designation that has been applied to the product. Load data is based on single spans resulting in worst case scenario. Deflections listed in our table are based on continuous spans, single span installation will result in increased deflection, for single spans multiply the corresponding deflection by 2.5.



DT3 Smart Tray



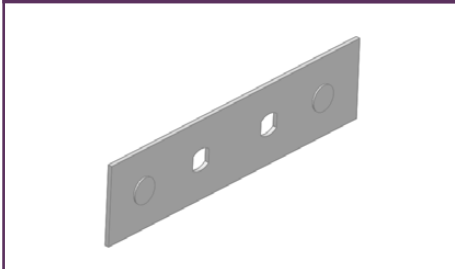
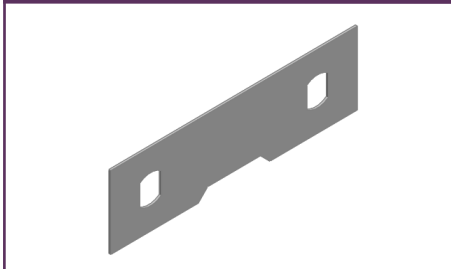
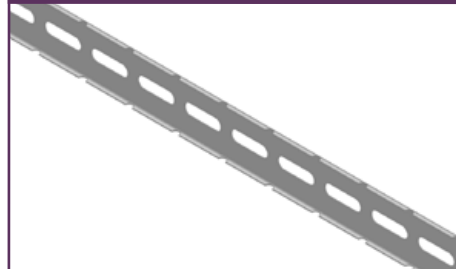
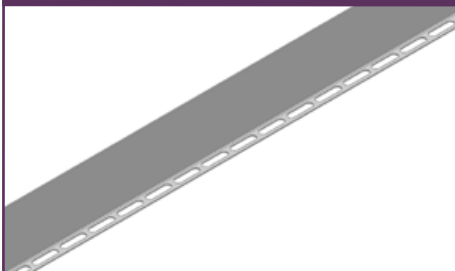
DT3 Ladder Tray Profile

DT3 LADDER TRAY ORDERING INFORMATION

Product Code	
DT315	150mm
DT330	300mm
DT345	450mm
DT360	600mm

Available Finishes	
G	Galvabond
H	Hot Dip Galvanised
PC	Powder Coated
ZP	Zinc Passivated

Example	Product Code	Finish
DT330PC	DT330	PC

DTSP - SPLICE PLATE

DTLP - RISER LINK

DTRP - RADIUS PLATE

DTBS - BARRIER STRIP

DTTX - TEE & CROSS BRACKET

DTHDC - HOLD DOWN CLAMP

DTB - SPLICE BOLT

DTN - SPLICE NUT


DT1 & DT3 LADDER TRAY ACCESSORIES ORDERING INFORMATION

Product Code	
DTSP	Splice Plate
DTLP	Link Plate
DTRP	Radius Plate
DTBS	Barrier Strip
DTTX	Tee & Cross Bracket
DTHDC	Hold Down Clamp
DTN*	Splice Nut
DTB*	Splice Bolt

Available Finishes	
G	Galvabond
H	Hot Dip Galvanised
PC	Powder Coated
Z	Zinc
ZP	Zinc Passivated

Example	Product Code	Finish
DTNH	DTN	H

*Only H & Z finishes available

GENERAL DESCRIPTION

Information

DT5 Ladder Tray System is designed for trapeze supported or surface mounted cable management and is ideally suited to small, medium and large size cables such as TPS, data comms, Mains & sub mains.

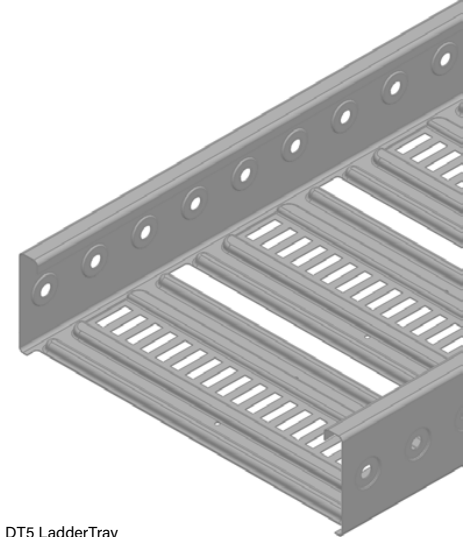
- Material 0.75mm thick
- 3m length
- 50mm Sides
- 40mm cable laying depth
- 20mm tie off centres
- Site fabricated fittings
- Flat and peaked cover option

Available Finishes

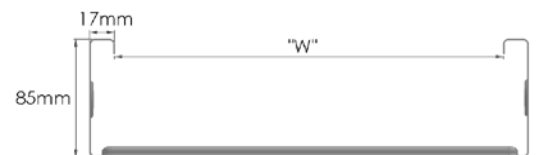
- Galvabond
- Hot dip galvanized
- Powder coated
- Zinc Passivated

Technical Information

Drillcut Load and Deflection data is derived from tests performed in a NATA certified testing environment in accordance to NEMA VE 1-2009 standards. All Ladders exceed the class designation that has been applied to the product. Load data is based on single spans resulting in worst case scenario. Deflections listed in our table are based on continuous spans, single span installation will result in increased deflection, for single spans multiply the corresponding deflection by 2.5.



DT5 LadderTray



DT5 LadderTray Profile

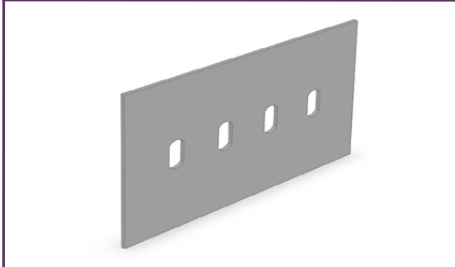
DT3 LADDER TRAY ORDERING INFORMATION

Product Code	
DT515	150mm
DT530	300mm
DT545	450mm
DT560	600mm

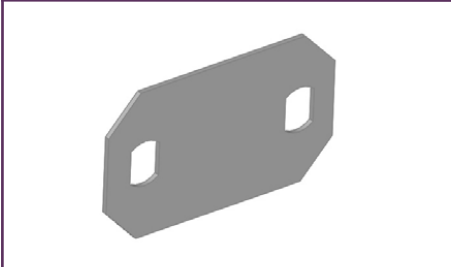
Available Finishes	
G	Galvabond
H	Hot Dip Galvanised
PC	Powder Coated
ZP	Zinc Passivated

Example	Product Code	Finish
DT530PC	DT530	PC

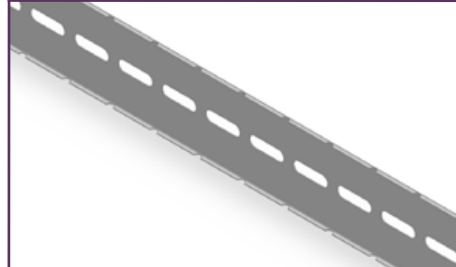
DT5SP - DT5 SPLICE PLATE



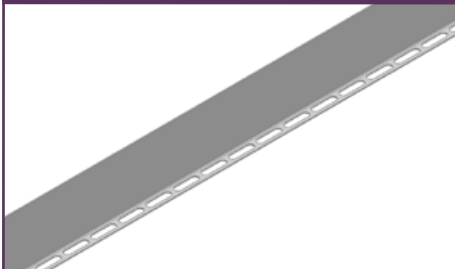
DT5LP - DT5 LINK PLATE



DT5RPG - DT5 RADIUS PLATE



DT5BS - DT5 BARRIER STRIP



DT5TX - TEE & CROSS BRACKET



DT5HDC - HOLD DOWN CLAMP



DTB - SPLICE BOLT



DTN - SPLICE NUT



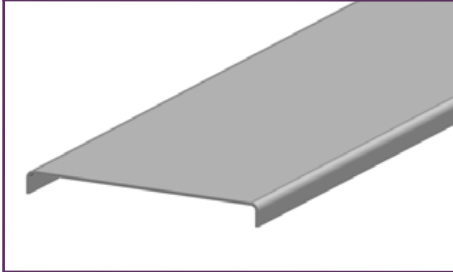
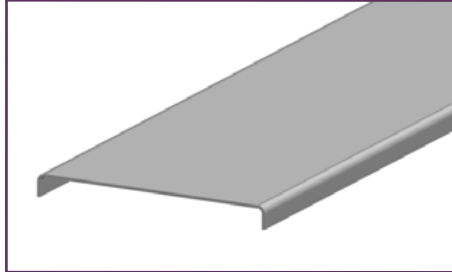
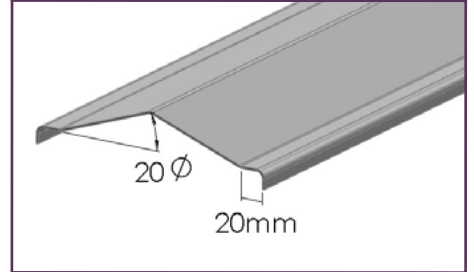
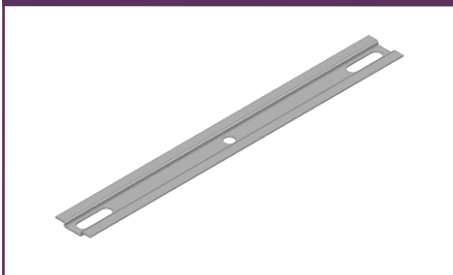
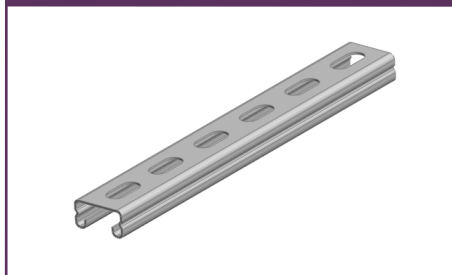
DT5 LADDER TRAY ACCESSORIES ORDERING INFORMATION

Product Code	
DT5SP	Splice Plate
DT5LP	Link Plate
DT5RP	Radius Plate
DT5BS	Barrier Strip
DT5TX	Tee & Cross Bracket
DT5HDC	Hold Down Clamp
DTN*	Splice Nut
DTB*	Splice Bolt

Available Finishes	
G	Galvabond
H	Hot Dip Galvanised
PC	Powder Coated
Z	Zinc
ZP	Zinc Passivated

Example	Product Code	Finish
DT5SPG	DT5SP	G

*Only H & Z finishes available

DT1 FLAT COVER

DT3 & DT5 FLAT COVER

DT3 & DT5 PEAKED COVER

LIGHT TRAPEZE

HEAVY TRAPEZE


T3 & T5 COVER ORDERING INFORMATION

Product Code			
DT1FC	DT1 Ladder Tray Flat Cover		
DTFC	DT3 & DT5 Ladder Tray Flat Cover		
DTPC	DT3 & DT5 Ladder Tray Peaked Cover		
Example	Product Code	Size	Finish
DTPC30G	DTPC	30	G

Size	
15	150mm
30	300mm
45	450mm
60	600mm

Available Finishes	
G	Galvabond
H	Hot Dip Galvanised
PC	Powder Coated
ZP	Zinc Passivated

DT1 & DT3 TRAPEZE ORDERING INFORMATION

Product Code	
DLT15	250mm
DLT30	400mm
DLT45	550mm
DLT60	700mm

Available Finishes	
G	Galvabond
H	Hot Dip Galvanised
PC	Powder Coated
ZP	Zinc Passivated

Example	Product Code	Finish
DLT30G	DLT30	G

90° INTERNAL RISER



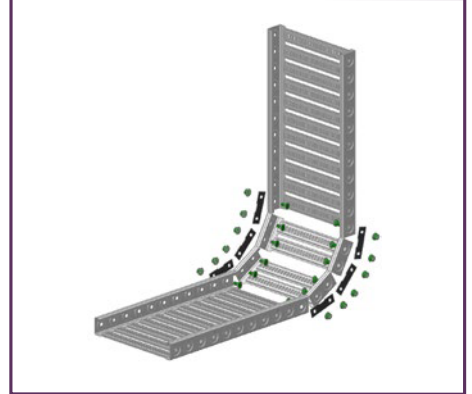
2 x DTTX Tee & Cross Bracket
8 x DTB Tray Bolts
8 x DTN Tray Nuts - per 90° Riser assembly

90° EXTERNAL RISER



2 x DTTX Tee & Cross Bracket
8 x DTB Tray Bolts
8 x DTN Tray Nuts - per 90° Riser assembly

90° RADIUS INTERNAL RISER



6 x DTLP Riser Links
12 x DTB Tray Bolts
12 x DTN Tray Nuts - per 90° Riser assembly

90° RADIUS EXTERNAL RISER



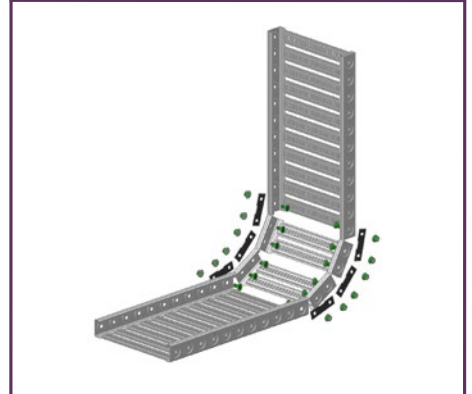
6 x DTLP Riser Links
12 x DTB Tray Bolts
8 x DTN Tray Nuts - per 90° Riser assembly

90° RADIUS BEND



1 x DTRP Radius Plate
12 x DTB Tray Bolts
12 x DTN Tray Nuts - per 90° Bend DTRP
Radius Plate will cover 2 bends in 150mm
& 300mm widths

TEE SECTION



2 x DTTX Tee & Cross Bracket
8 x DTB Tray Bolts
8 x DTN Tray Nuts - per Tee double for
cross section



11 Chapman Place Eagle Farm Qld 4009 | PO Box 2640 Ascot Qld 4007
P: 1300 923 414 | F: 1300 923 413 | E: sales@drillfast.com.au | W: drillfast.com.au