



DROP PREVENTION

ISSUE 1



DROP PREVENTION

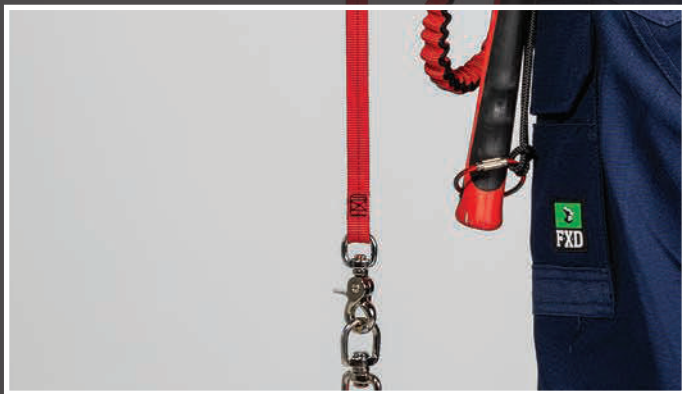
Drop Prevention is your strategic partner to assist you in delivering your goals. A true 360° solution, it delivers a range of modular solutions, allowing you to achieve best-in-class results for working safely with tools at height.

The comprehensive suite is built on the foundation of a true partnership, delivering ongoing support and real-time results, ensuring you deliver on your safety and efficiency targets.



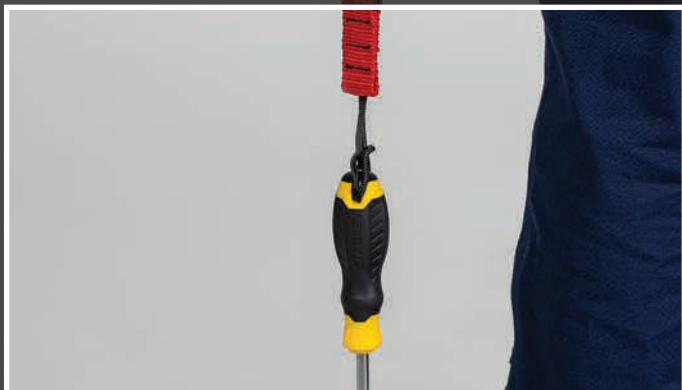
TETHER ANCHORS

Fully load rated and compatible with all GRIPPS tethers, our range of tether anchor points and connection options are there to support your working style and kit load-out.



TOOL TETHERS

Tethers are the lifeline between your tool's attachment point and the anchor. Our tethers are engineered with a specific use in mind, whether it's a lightweight coil to stay out of site and mind, or a heavy-duty karabiner large enough to lock around scaffolding.



TOOL CONNECTORS

Our attachment points create a fully load rated point at which to connect your tool with a tether. A variety of options exist to suit almost every configuration, allowing you to create an attachment point without modifying your tool, regardless of whether or not your tool was manufactured to support tethering.

NO MORE DROPS FOR A SAFER WORKSITE

TETHER ANCHORS

Cut 5 Flexi Lite Gloves	04
Slip-on Wrist Anchor	05
Adjustable Wrist-Anchor	05

TOOL TETHERS

Bungee Tether - Dual Action	07
Bungee Tether - Single Action	07
Tool Grapple	08
Coil Hard Hat Tether	08

TOOL CONNECTORS

Phone Gripper with Coil Tether	10
Screwlock Cable	11
Tool Ring	11
Tool-Hitch	12
Tape Measure catch	12
Little Gripper	13
Tool Catch	13
V-Gripp Tape	14

TRANSPORT & STORAGE

Bolt-Vault	16
Bolt-Safe Rail Pouch	17
Bolt-Safe Pouch	18
Bottle/pray Can Holster	19
Two-way Radio Holster	19

KITS

40 Tool Tether Kit With Bull Bag and Bolt-Safe Pouch	21
Mecanical Fitters Trade Kit	22
Electrical Trade Kit	22
EWP Tool Tether Kit	23
Battery Tool Holster Belt Retractor Kit	24
Battery Catch Holster Belt Retractor Kit	24
Slip-On Wrist Anchor with Tool Tether	25
Adjustable Wrist-Anchor with Tool Tether	25
Little Gripper Kit (without Gripplink)	26
Little Gripper Kit (with Gripplink)	26
Retractable Tape Measure Latch Kit	26



TETHER ANCHORS

CUT 5 FLEXI LITE GLOVES



Mechanical Rating:	4544
Cut Level Rating:	5
Max Load:	2.5kg 5.0lbs

PRODUCT DESCRIPTION

With the C5-Flexi Lite, whenever you’re carrying your gloves around the worksite, you’re also carrying a fully load rated drop prevention system. The patent-pending tether anchor point is engineered directly into the glove and is load rated for any tool weighing up to 2.3kg/5.0lbs.

The key benefit of tethering to your wrist is the ability to maintain full dexterity and range of motion while on the job. With nothing attached to a belt or external structure, you’re free from tangles, tension and catches.

The C5 rated gloves are manufactured from a super lightweight HPPE knit-liner and double-coated with a sandy foam nitrile, combining maximum cut resistance and dexterity with long-lasting grip. This is a glove that’s engineered to last.

KEY FEATURES

- Super lightweight HPPE knit liner providing maximum cut resistance.
- Double coated sandy foam nitrile for long lasting grip.
- Fully load rated tether anchor everywhere you go.
- Maintain full usability of tools.
- Cut Level 5 protection.

Code Small size:	27S21625-S
Code Medium size:	27S21625-M
Code Large size:	27S21625-L
Code X Large size:	27S21625-XL

SLIP-ON WRIST ANCHOR



PRODUCT DESCRIPTION

Lightweight, no-fuss and fully load rated, the Slip-On Wrist Anchor is a favourite amongst all trades.

If you want a cost-effective tether anchor for working with hand-tools at height, you can't go wrong with the Slip-On Wrist Anchor.

Available in three different sizes, simply slip on, tether your tool and get to work.

KEY FEATURES

- Light, flexible and strong.
- Suitable for use with the full range of GRIPPS wrist tethers.
- Fully load rated tether anchor point.
- Three different sizes available.

Max Load:	2.5kg 5.5lbs
Code Small size:	27H01085-S
Code Medium size:	27H01085-M
Code Large size:	27H01085-L

ADJUSTABLE WRIST-ANCHOR



PRODUCT DESCRIPTION

Tether your hand tools with comfort and security using the Adjustable Wrist-Anchor. This one-size-fits-all wristband features a built-in fully load rated tether point for total tool control without the risk of snags or tangles.

Industrial grade Velcro repels dust, grease and grime to keep your Adjustable Wrist-Anchor firmly secured at all times, while tactical elastic webbing protects against tears.

KEY FEATURES

- Light, flexible and strong.
- Can be attached to hand-rails or on person.
- 5.0cm | 2" tactical elastic webbing.
- Industrial grade Velcro adjusts diameter to suit all users.
- Suitable for use with the full range of GRIPPS wrist tethers.
- Fully load rated tether anchor point.

Max Load:	2.5kg 5.5lbs
Code:	27H01086



TOOL TETHERS

BUNGEE TETHER DUAL - ACTION 7.0KG | 15LBS



PRODUCT DESCRIPTION

Lightweight and built to last, the Bungee Tether Dual-Action is as reliable as it is functional.

One of our most popular pieces of kit across all industries, the Bungee Tether Dual-Action features a dual-lock carabiner and elasticised webbing made from heavy-duty polyester.

The elastic properties of this durable material absorb downward force from a dropped tool, stabilising the user while protecting against bounce-back.

An extension range of 42cm/16" means the Bungee Tether Dual-Action is as compact as possible until required for use.

KEY FEATURES

- Heavy-duty elasticised webbing.
- Textured tail loop to fasten securely to tether anchor.
- Dual-action carabiner with swivel head.
- Force absorption & bounce-back protection.
- Lightweight and compact design.

Min Length:	89cm 35"
Max Length:	131cm 51"
Max Load:	7.0kg 15lbs
Code:	27H01073

BUNGEE TETHER SINGLE - ACTION 2.5KG | 5.0LBS



PRODUCT DESCRIPTION

If you need a tool tethering solution that's simple, reliable and practical, then the Bungee Tether Single-Action has you covered.

Constructed from the same heavy-duty elasticised webbing as the rest of the GRIPPS bungee range, there are no compromises when it comes to force-absorption or quality of materials.

A steel carabiner and tactical strength anchoring loop secures any tool up to 2.5kg/5.0lbs from drops.

KEY FEATURES

- Heavy-duty elasticised webbing.
- Tactical strength anchoring loop secures to tool or tether anchor.
- Force absorption & bounce-back protection.
- Steel single-action carabiner.
- Lightweight and compact design.

Min Length:	89cm 35"
Max Length:	131cm 51"
Max Load:	2.5kg 5.0lbs
Code:	27H01072

TOOL GRAPPLE



PRODUCT DESCRIPTION

The Tool Grapple® sets the benchmark for retractable tool tethers in today's world.

Exclusively developed by GRIPPS and engineered to handle the rigours of the harshest height environments, this tool retractor exceeds expectations.

The Tool Grapple® has been dynamically tested for hand tools weighing up to 2.5kg/5.0lbs. This includes a substantial safety factor with the failure point recorded at 550kg/1212lbs!

KEY FEATURES

- Rubberised ABS synthetic housing.
- Woven stainless steel (PU sleeved) wire cable for superior flexibility.
- 1.25m/49" auto-retracting wire cable tether.
- Self-locking dual-action carabiner for maximum safety.
- Can be connected to the wrist when attached to a Wrist Anchor (H01086)

Max Length:	1.25m 49"
Max Load:	2.5kg 0.5lbs
Code:	27H01122

COIL HARD HAT TETHER (NON-CONDUCTIVE)



PRODUCT DESCRIPTION

Reliable and out of the way, the Coil Hard Hat Tether (Non-conductive) is so low-profile you won't even know you're wearing it.

The coil features industrial-grade PU to deliver strength and work-site ruggedness.

A poly clamp far exceeding its maximum load rating combines with a tactical, light-weight design, to deliver dependable strength when required, and low-profile compatibility when not.

KEY FEATURES

- Lightweight and low profile design.
- Strong, non-conductive poly clamp.
- Industrial grade PU.

Min Length:	11cm 4.0"
Max Length:	86cm 34"
Max Load:	0.5kg 1.0lbs
Code:	27H01075



TOOL CONNECTORS

PHONE GRIPPER WITH COIL TETHER



PRODUCT DESCRIPTION

Now you can tether your phone or mobile device WITHOUT the need for a permanent or semi-permanent connection point. Used in conjunction with a load rated tether, the Phone Gripper use purpose-built silicon to create a fully load rated mobile device tethering solution with zero impact on device operation.

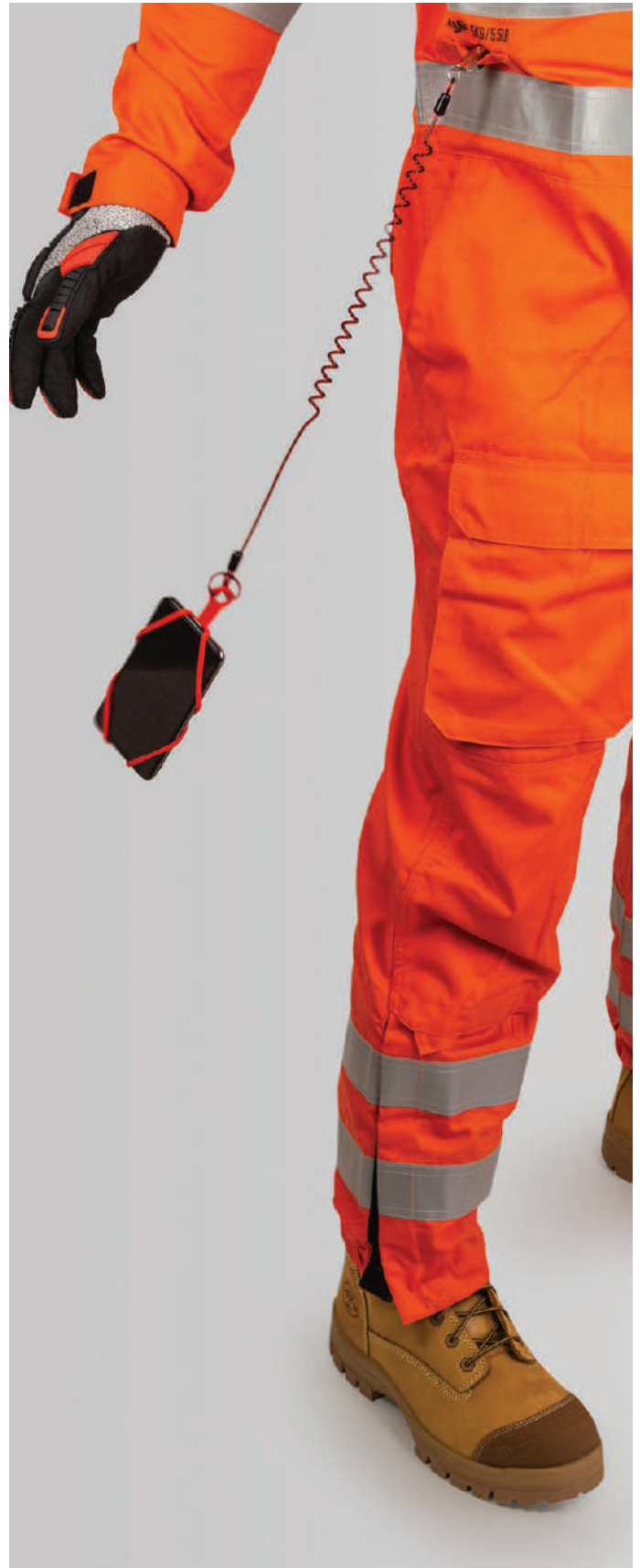
Traditional mobile device tethering relies on the use of destructive adhesives directly on your mobile device to attach a load rated connection point to your mobile device that never comes off.

The Phone Gripper's flexible design allows you to tether your mobile device 'on-demand', allowing you free use of your mobile device when not operating at height.

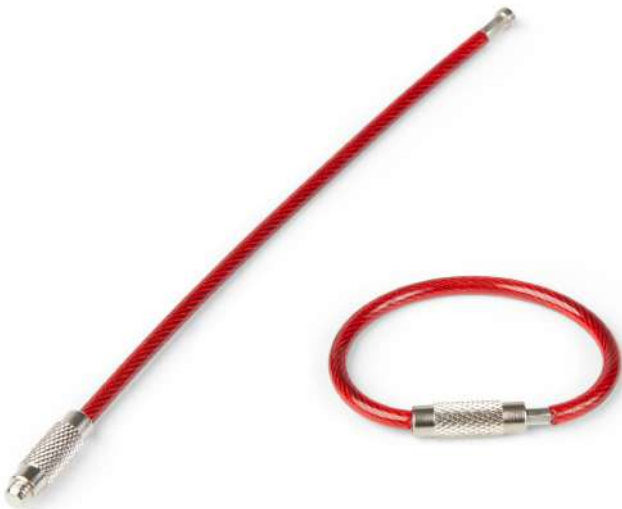
KEY FEATURES

- Custom silicon compound for strength & grip.
- Avoids installing a permanent connector point on a mobile device.
- No additional adhesives required.
- Integrated and fully load rated tether connection eyelet.
- Compatible with virtually every smartphone make & model.
- Includes coil tether.

Max Load:	0.3kg 1.0lbs
Min Phone Size:	135mm x 65mm x 7.0mm
Max Phone Size:	160mm x 80mm x 10mm
Code:	27H02039P



SCREWLOCK CABLE



PRODUCT DESCRIPTION

The Screwlock Cable is one of the quickest, easiest and most cost-effective way to create a tool connection point from existing hang-holes or slots. With a core band made from aircraft-grade steel, the fully load rated and certified Screwlock Cable is as dependable as it is hard-wearing.

Create your secure tool connection point by simply threading the Screwlock Cable through an existing hang-hole/slot in your tool, and screw closed. Add a drop of thread-locking compound before you screw shut to create a permanent, load rated connection point on your tools.

KEY FEATURES

- PU coated aircraft grade steel provides a hard wearing tool anchor that's easy to maintain.
- Fully load rated and certified.
- Easy installation process that can be performed on-site.
- Can be locked permanently using thread locking compounds.
- Available in two sizes.

Max Load: 2.0kg

Code | 4.0mm x 160mm: 27H01032

Code | 4.0mm x 200mm: 27H01033

TOOL RING



PRODUCT DESCRIPTION

Tool Rings are the most economical solution to creating a load rated anchor point. Suitable for a vast range of hand tools, Tool Rings are quick and easy to apply.

KEY FEATURES

- Quick, easy installation with no special tools or equipment required.
- Fully certified and load rated.
- Supplied as 10 per pack

Size: 38mm

Max Load: 1.0kg

Code: 27H01038-10

TOOL-HITCH



PRODUCT DESCRIPTION

A simple choking mechanism in four variations allows the Tool-Hitch to secure anything from power tools to crowbars to sledgehammers.

By creating a loop around an enclosed handle, the Tool-Hitch produces a simple but strong and dependable tool connection point.

For application on open spaces, such as a sledgehammer handle, the Single Arm, Dual Arm and Heavy-Duty Tool-Hitch variations allow you to anchor the Tool-Hitch in position with the use of V-Gripp Tape.

KEY FEATURES

- Four variations allow for application to virtually every power/heavy tool.
- Instantaneous application to tools with an enclosed area.
- Tactical grade nylon for maximum strength.

Max Load:	16kg 35lbs
Code:	27H01055

TAPE MEASURE CATCH



PRODUCT DESCRIPTION

Engineered to be compatible with virtually all tape measure brands from 5.0m - 8.0m/197" - 315" in length, the Tape Measure Catch retains full functionality while providing security when working at heights.

Used in conjunction with a Tether, GRIPPS Tape Measure Latch or GRIPPS Tape Measure Holster, the Tape Measure Catch keeps your tape measure out of the way when not needed, and in your hand when it is.

KEY FEATURES

- Can be worn on or off a work belt.
- Compatible with the GRIPPS Tape Measure Latch and GRIPPS Tape Measure Holster.
- Compatible with virtually all tape measure brands and sizes from 5.0m - 8.0m/197" - 315".
- Maintains full tape measure functionality whilst secured.

Max Load:	1.0kg 2.0lbs
Code:	27H02056

LITTLE GRIPPER



PRODUCT DESCRIPTION

If you need a tool tethering solution that's quick to apply and has zero impact on tool functionality, then you need a Little Gripper.

Moulded from a specialised TPU material, the Little Gripper provides an instant fully load rated tool connection point without the need for adhesives.

Compatible with round and polygonal-shaped shafts, the 4 sizes cover a massive range of tools including screwdrivers, chisels, punches, pliers, pens, pry bars and more.

*Supplied as a pack of 5

Tool Shaft Diameter	Max Load (without gripping)
3.0mm - 5.0mm	0.3kg
5.0mm - 9.0mm	0.4kg
8.0mm - 13mm	0.5kg
12mm - 16mm	0.7kg

Code 3.0mm - 5mm:	27H03040
Code 5.0mm - 9mm:	27H03041
Code 8.0mm - 13mm:	27H03042
Code 12mm - 16mm:	27H03043

TOOL CATCH



PRODUCT DESCRIPTION

The tool Catch provides a strong, stable & durable retrofit tool connection point to a vast range of hand tools.

Attach the Tool Catch to your tool with V-Gripp Tape to create a fully load rated tool connection point for the most rugged conditions.

KEY FEATURES

- Tactical nylon for maximum strength.
- Closed metal ring to prevent warping with use.
- Easy installation process that can be done on-site.
- Fully certified and load rated when used with V-Gripp Tape.

Size:	25mm x 90mm 1.0"x3.5"
Max Load:	2.5kg 5.0lbs
Code:	27H01006



V-GRIPP TAPE



PRODUCT DESCRIPTION

V-Gripp tape distinguishes itself from the competition with its self-vulcanizing technology. By not relying on a traditional adhesive layer, V-Gripp Tape outperforms all other tapes on the market by creating a fully load rated and certified tool attachment point, when used in combination with a Tool Catch. Extremely durable and easy to apply, V-Gripp Tape is recommended for use on-site and in extreme conditions.

KEY FEATURES

- Self-Vulcanizing - Doesn't rely on chemical adhesives.
- Heat resistant to 150°C/302°F
- Resistant to water and oil.
- Extremely resilient and long lasting.

Width:	25mm 1.0"
Length:	2.7m 106"
Code:	27H01010

INSTALLATION INSTRUCTIONS

STEP 1: Cut a strip of V-Gripp Tape approximately 30cm/12" to 40cm/16" long depending on the size of the handle. Peel plastic coating away from the wrap. Tape should wrap 10-12 times around the tool. Note: Never use a Tool Catch with V-Gripp Tape on the tapered portion of a tool.

STEP 2: Place a Tool Catch attachment so that the ring of the Tool Catch is facing away from the centre of gravity of the tool. Ensure that when installed, the Tool Catch will not interfere with the safe working condition of the tool. Make sure the tool is free of debris which would interfere with the bonding of the V-Gripp Tape.

STEP 3: Wrap the tape around the tool while stretching the tape. It is critical to stretch the tape while wrapping, as this activates the tape and causes it to self-vulcanize creating a secure connection.

STEP 4: Once the connection is complete, test the connection to ensure proper installation has taken place.

IMPORTANT: Remember to always inspect the connection prior to each use for damage or irregularities that might affect the connection.



TRANSPORT & STORAGE

BOLT - VAULT



Size:	13cm x 11cm x 25cm
Max Load (D-Ring):	2.5kg 5.0lbs
Max Load (Pouch):	2.5kg 5.0lbs
Code:	27H02105

PRODUCT DESCRIPTION

A 'best in class' self-closure system makes it almost impossible for loose nuts, bolts and other small items to fall out of the Bolt-Safe Pouch.

Even when turned upside down and shaken vigorously, the Bolt-Safe Pouch keeps all contents trapped safely inside. Attaches to belt, railing, harness or scaffold tube with a load rated Velcro strap.

Compatible with both tool belts and harnesses, the Bolt-Safe Pouch self-closure system allows for easy retrieval of contents, even when wearing gloves.

The automatic self-closure system means no effort is required to keep contents trapped and secure.

KEY FEATURES

- Keeps small objects such as nuts, bolts, screws etc. securely enclosed.
- Fits easily onto most tool belts and can easily be fitted to harnesses and rails with Velcro strap.
- Canvas material that repels oil and is easy to wipe clean.
- Reach-in retrieval and automatic self-closure means no more lids or zips.

BOLT - SAFE RAIL POUCH



Size:	30cm x 20cm x 6.0cm
Max Load (Pouch):	5.0kg 11lbs
Code:	27H02102

PRODUCT DESCRIPTION

Building on the legacy of the Bolt-Safe Pouch, the Bolt-Safe Rail Bag features the same 'best in class' self-closure system that makes it almost impossible for loose nuts, bolts and other small items to fall out.

The Bolt-Safe Rail Bag attaches to belts, railing, harnesses and scaffold tubes with fully load rated straps.

Even when turned upside down and shaken vigorously, the Rail Bag keeps all contents trapped safely inside.

A reinforced mesh window allows light into the pouch, eliminating the guessing game of trying to find items in the pouch by touch alone.

KEY FEATURES

- Keeps small objects such as nuts, bolts, screws etc. securely enclosed.
- Attaches easily to tool belts, harnesses and rails.
- Made from tough canvas that repels oil and is easy to wipe clean.
- Reach-in retrieval and automatic self-closure means no more lids or zips.
- Reinforced mesh window allows light inside the pouch.

BOLT - SAFE POUCH



Max Load (D-Ring):	2.5Kg 5.0lbs
Max Load (Pouch):	5.0kg 11lbs
Code:	27H02101

PRODUCT DESCRIPTION

A 'best in class' self-closure system makes it almost impossible for loose nuts, bolts and other small items to fall out of the Bolt-Safe Pouch.

Even when turned upside down and shaken vigorously, the Bolt-Safe Pouch keeps all contents trapped safely inside. Attaches to belt, railing, harness or scaffold tube with a load rated Velcro strap.

Compatible with both tool belts and harnesses, the Bolt-Safe Pouch self-closure system allows for easy retrieval of contents, even when wearing gloves.

The automatic self-closure system means no effort is required to keep contents trapped and secure.

KEY FEATURES

- Keeps small objects such as nuts, bolts, screws etc. securely enclosed.
- Fits easily onto most tool belts and can easily be fitted to harnesses and rails with Velcro strap.
- Canvas material that repels oil and is easy to wipe clean.
- Reach-in retrieval and automatic self-closure means no more lids or zips.

BOTTLE/SPRAY CAN HOLSTER



PRODUCT DESCRIPTION

Keep drinks cool and spray cans secure with the Insulated Water Bottle/Spray Can holster.

Constructed from synthetic rubber that insulates against heat, the top securing flap has been engineered to allow full functionality of a spray-can from within the holster, as well as access to water bottle pop-tops and screw tops.

KEY FEATURES

- Insulated synthetic rubber design that can stretch to accommodate most sizes of bottles and cans.
- Full functionality of spray cans and screw/pop-top water bottles whilst in the holster.

Max Load: 0.75kg | 1.0lbs

Code: 27H02038

TWO-WAY RADIO HOLSTER



PRODUCT DESCRIPTION

Compatible with virtually every Two-Way Radio on the market, the Adjustable Radio Holster is also compatible with other small electronic devices such as phones and cameras.

Easily mounted to either work belts or harnesses, the Adjustable Radio Holster uses a two-way Velcro mounting sleeve to secure itself to the user.

Use in conjunction with a GRIPPS Coil E-Tether With E-Catch to protect against drops.

KEY FEATURES

- Fully adjustable to be compatible with virtually all Two-Way Radios.
- Suitable for use with all small electronic devices such as phones and cameras.
- Easily mountable to work belts or harnesses via a twoway Velcro mounting sleeve.
- Compatible with the GRIPPS Coil E-Tether range.

Max Load: 0.5kg | 1.0lbs

Code: 27H02034



KITS

40 TOOL TETHER KIT WITH BULL BAG AND BOLT-SAFE POUCH



CODE: 27H01403

KIT CONTENTS

- 9 x H01005 Tool Catch
- 9 x H01006 Tool Catch
- 1 x H01057 Dual Arm Tool-Hitch
- 5 x H01021 Swivel Catch
- 3 x H01073 Bungee Tether Dual-Action
- 1 x H01069 Coil Tether Dual-Action
- 2 x H01010 V-Gripp Tape
- 2 x H01085 Slip-On Wrist Anchor (Medium)
- 2 x H01067 Webbing Wrist Tether Single-Action
- 1 x H01110 Bull Bag
- 1 x H01063 Coil E-Tether With Poly Clip (Non-Conductive)
- 1 x H01035 E-Catch
- 1 x H02101 Bolt-Safe Pouch
- 25 x H01037 Tool Ring
- 6 x H01030 Screwlock Cable
- 6 x H01031 Screwlock Cable
- 1 x H01075 Coil Hard Had Tether (Non-Conductive)
- 1 x H02039 Phone Gripper
- 2 x H01142 Belt-Loop Anchor
- 1 x H03044P Little Gripper With GrippLink Kit

EWP TOOL TETHER KIT



CODE: 27H01420

KIT CONTENTS

- 1 x H01073 Bungee Tether Dual-Action
- 1 x H01079 Webbing Tether Extra Heavy-Duty Dual-Action
- 1 x H01142 Belt-Loop Anchor
- 1 x H01085 Slip-On Wrist Anchor (Medium)
- 1 x H01067 Webbing Wrist Tether Single-Action
- 1 x H01010 V-Gripp Tape
- 6 x H01005 Tool Catch
- 3 x H01006 Tool Catch
- 1 x H01057 Dual Arm Tool-Hitch
- 3 x H01030 Screwlock Cable
- 3 x H01031 Screwlock Cable
- 2 x H02102 Bolt-Safe Rail Bag
- 1 x H01145 GTS-25T
- 1 x H03044P Little Gripper With GrippLink Kit

BATTERY TOOL HOLSTER BELT RETRACTOR KIT



PRODUCT DESCRIPTION

Protect your battery power tools against drops with this economic kit.

Create an instant load-rated tool connector point by choking the Swivel Catch around the closed handle of your power tool, then tether to your work belt via the retracting Tool Grapple®.

Simply drop your power tool into the BOA Holster to keep it secure at all times when not in use.

KIT CONTENTS

- 1 x H02031 BOA Holster
- 1 x H01021 Swivel Catch
- 1 x H01122 Tool Grapple

Code: 27H02031P

BATTERY CATCH HOLSTER BELT RETRACTOR KIT



PRODUCT DESCRIPTION

Protect your battery power tools against drops with this economic kit.

Compatible with all standard work belts, the retractable Tool Grapple® connects to your battery tool via the easy to install Battery Catch Holster, which creates a fully load rated tool connector point by securing around the battery of your powertool.

Simply drop your power tool into the BOA Holster to keep it secure at all times when not in use.

KIT CONTENTS

- 1 x H02031 BOA Holster
- 1 x H02032 Battery Catch Holster
- 1 x H01122 Tool Grapple

Code: 27H02032P

SLIP-ON WRIST ANCHOR WITH TOOL TETHER



PRODUCT DESCRIPTION

Lightweight, no-fuss and fully load rated, the Slip-On Wrist Anchor is a favourite amongst all trades. Coupled with the Webbing Wrist Tether Single - Action, you have everything you need to secure your tool against drops.

If you want a cost-effective tether anchor for working with hand-tools at height, you can't go wrong with the Slip-On Wrist Anchor. Available in three different sizes, simply slip on, tether your tool and get to work.

KIT CONTENTS

- Includes 1 x H01067 Webbing Wrist Tether Single-Action.
- Light, flexible and strong.
- Fully load rated tether anchor point.
- Three different sizes available.

Length:	25cm 10"
Max Load:	2.5kg 5.0lbs
Code Small:	27H01087-S
Code Medium:	27H01087-M
Code Large:	27H01087-L

ADJUSTABLE WRIST-ANCHOR WITH TOOL TETHER



PRODUCT DESCRIPTION

Tether your hand tools with comfort and security using the Adjustable Wrist-Anchor. This one-size-fits-all wristband features a built-in fully load rated tether point for total tool control without the risk of snags or tangles. Coupled with the Webbing Wrist Tether Single-Action, you have everything you need to secure your tool against drops.

Industrial grade Velcro repels dust, grease and grime to keep your Adjustable Wrist-Anchor firmly secured at all times, while tactical elastic webbing protects against tears.

KIT CONTENTS

- Includes 1 x H01067 Webbing Wrist Tether Single-Action.
- Industrial grade Velcro adjusts diameter to suit all users.
- Fully load rated tether point.

Length:	25cm 10"
Max Load:	2.5kg 5.0lbs
Code:	27H01088

LITTLE GRIPPER KIT WITHOUT GRIPPLINK



CODE: 27H03044

KIT CONTENTS

- 1 x Size #1 Little Gripper
- 1 x Size #2 Little Gripper
- 1 x Size #3 Little Gripper
- 1 x Size #4 Little Gripper

LITTLE GRIPPER KIT WITH GRIPPLINK



CODE: 27H03044P

KIT CONTENTS

- 1 x Size #1 Little Gripper
- 1 x Size #2 Little Gripper
- 1 x Size #3 Little Gripper
- 1 x Size #4 Little Gripper
- 4 x GrippLink Connectors

RETRACTABLE TAPE MEASURE LATCH KIT



CODE: 27H02059

PRODUCT DESCRIPTION

The Tape Measure Latch Kit combines the GRIPPS Tape measure tethering solution.

Compatible with virtually all tape measure brands from 5m - 8m/197" - 315", the Tape Measure Latch Kit is a robust and compact piece of kit featuring built-in retractor, 2 load rated D-Rings, Swivel Catch and a Tape Measure Latch.

Designed for working at height, the Retractable Tape Measure Holster keeps your tools secure and accessible in a lightweight and industrial-grade design. The robust and compact Tape Measure Holster suits all standard tape measure sizes.

Developed in the USA, the built-in retractor technology is the result of extensive research and on-site trialling. It features a locking system to remove tension from the tether while working with your tools.

KIT CONTENTS

- 1 x H02058 Retractable Tape Measure Latch
- 1 x H02056 Tape Measure Catch
- 1 x H01021 Swivel Catch

Max Load (D-Ring):	2.5kg 5.0lbs
Max Load (Retractor):	0.7kg 1.0lbs
Max Load (Holster):	1.0kg 2.0lbs



11 Chapman Place Eagle Farm Qld 4009 | PO Box 2640 Ascot Qld 4007
P: 1300 923 414 | F: 1300 923 413 | E: sales@drillfast.com.au | W: drillfast.com.au

© Copyright Drillfast 2021. Products and specifications may change without notice.