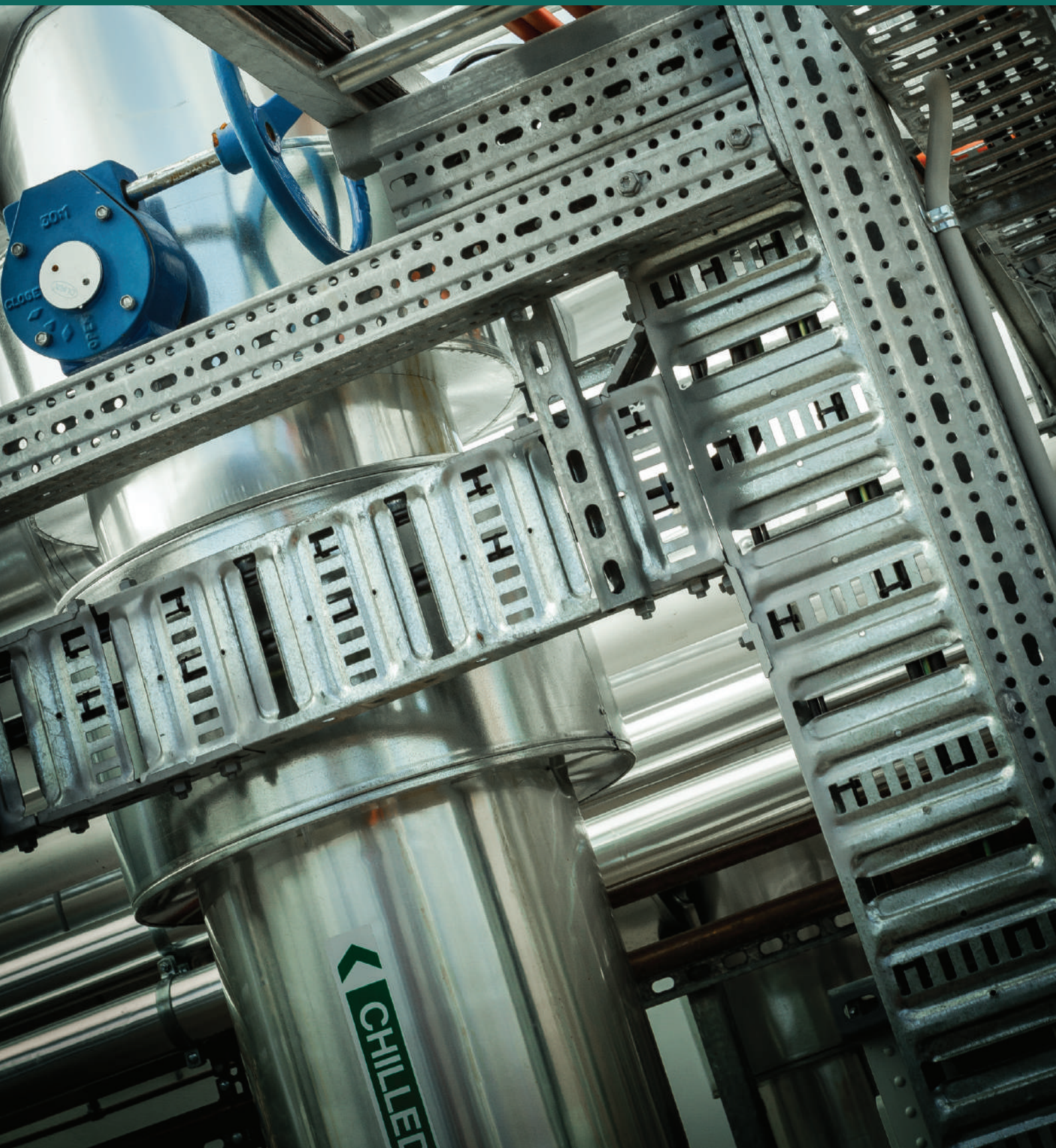




FRAMO | INDUSTRIAL





Framo is a multi-functional, non-welded support system for the modular construction of framing solutions. This amazing product simply screws together, eliminating the need of drilling, bolting and welding, effectively preventing onsite delays through its pregalvanised finish.



Non-welded modular steelwork



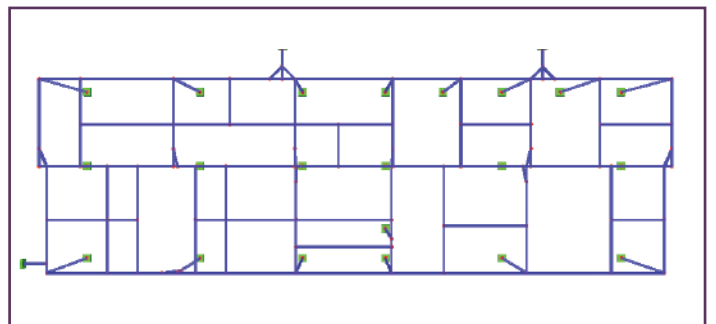
Frame and module assembly modifications can be made quickly on site with no loss of time cut-outs or re-works



Higher performance lower weight of steel



End-2-end solution design, plan, install and ready to use!





Lightweight, robust and incredibly versatile, this innovative system is designed to provide high torsional resistance, allowing for durable structural support framework in the construction, mining and process industries. In addition to its time and cost efficient capabilities, it is up to 80% lighter when aligned with comparable traditional steelwork profiles, making it the perfect solution for heavy duty support applications.



Easy to assemble and disassemble



Compatible with other installation systems



High corrosion resistance as standard



One thread forming screw for all component connections

## F80 BEAM SECTION



PART NO	LENGTH (mm)	SIZE (mm)	QTY
42192539	6000	80 x 80	1

## F80 BASE PLATE



PART NO	SIZE (mm)	QTY
42192801	220 x 220 x 192	1

## F80 END CAP



PART NO	SIZE (mm)	QTY
42192674	80 x 80	25

## F80 END SUPPORT - CENTRE



PART NO	SIZE (mm)	QTY
42192856	190 x 80 x 148	1

## F80 END SUPPORT - OFFSET



PART NO	SIZE (mm)	QTY
42192863	190 x 80 x 148	1

## F80 OCTAGONAL COUPLING



PART NO	SIZE (mm)	QTY
42111446	73 x 280	1

## F80 PIVOT JOINT



PART NO	SIZE (mm)	QTY
42113835	80 x 80 x 140	1

## F80 STRUT ADAPTER



PART NO	SIZE (mm)	QTY
42192887	190 x 80	1

## F80 BEAM SECTION HOLDER



PART NO	SIZE (mm)	QTY
42111732	199 x 80	1

## F80 U-HOLDER - HEAVY DUTY



PART NO	SIZE (mm)	FLANGE WIDTH	QTY
42194010	80 x 80 x M12	40mm	10

## F80 MOUNTING PLATE



PART NO	SIZE (mm)	QTY
42192870	190 x 80 - M12	1

## F80 U-HOLDER



PART NO	SIZE (mm)	FLANGE WIDTH
42192683	80 x 80 x M10	16mm

## F100 BASE PLATE



PART NO	SIZE (mm)	QTY
42113075	220 x 220 x 192	1

## F100 END SUPPORT - CENTRE



PART NO	SIZE (mm)	QTY
42113073	210 x 100 x 188	1

## F100 PIVOT JOINT



PART NO	SIZE (mm)	QTY
42113838	100 x 100 x 140	1

## F100 END CAP



PART NO	SIZE (mm)	QTY	QTY
42113086	100 x 100	25	20

## F100 BEAM SECTION



PART NO	LENGTH (mm)	SIZE (mm)	QTY
42112904	6000	100 x 100	1

## FRAMO HEX SELF TAPPER



PART NO	DRIVE TYPE	QTY
42192512	SW17/T50	100