



RETROFIT FIRE COLLARS UP TO 150mm



RETROFIT COLLARS

Building fires are a real concern in every country. Passive fire systems, including the installation of retrofit fire collars, help make it safe for the occupants and emergency personnel, in the event of a fire. Retrofit fire collars are available in a range of styles and sizes for many application types. Due to the many different applications on site these collars are tested in multiple lab conditions with consideration for wall construction, wall thickness, hole size, service size and type, fire resistance levels and fixing options.

W Wall **F** Floor waste & shower
S Stack **S** Ceiling



Code	Size	Qty
22RF-32R	16-32 mm	50



Code	Size	Qty
22RF-50R	40-50mm	40



Code	Size	Qty
22RF-63R	65mm	36



Code	Size	Qty
22RF-65-80R	65-80mm	50



Code	Size	Qty
22RF-110R	100mm	20



Code	Size	Qty
22RF-LP50R	50mm	50



Code	Size	Qty
22RF-LP65R	65mm	50



Code	Size	Qty
22RF-LP80R	80mm	50



Code	Size	Qty
22RF-LP100R	100mm	50



Code	Size	Qty
22RF-LP100R-B	100mm	18

It is the responsibility of the installer & relevant certifying parties to ensure compliance for each application. For specific product details please contact Drillfast. E&OE

RETROFIT COLLARS

W Wall F Floor waste & shower
S Stack S Ceiling



Code	Size	Qty
22RF-LP100R-D	100mm	18



Code	Size	Qty
22RF-HP100R	100mm	50



Code	Size	Qty
22RF-HP150R	150mm	6

HVAC & ELECTRICAL FIRE COLLARS



Code	Size	Qty
22RF-MS70R	70mm	50



Code	Size	Qty
22RF-32R	16-32 mm	50

*22RF-32R can also be used for composite plastic/AL. pipe collars

COMPOSITE PLASTIC/AL. PIPE COLLARS



Code	Size	Qty
22GAS32	16-32mm	50



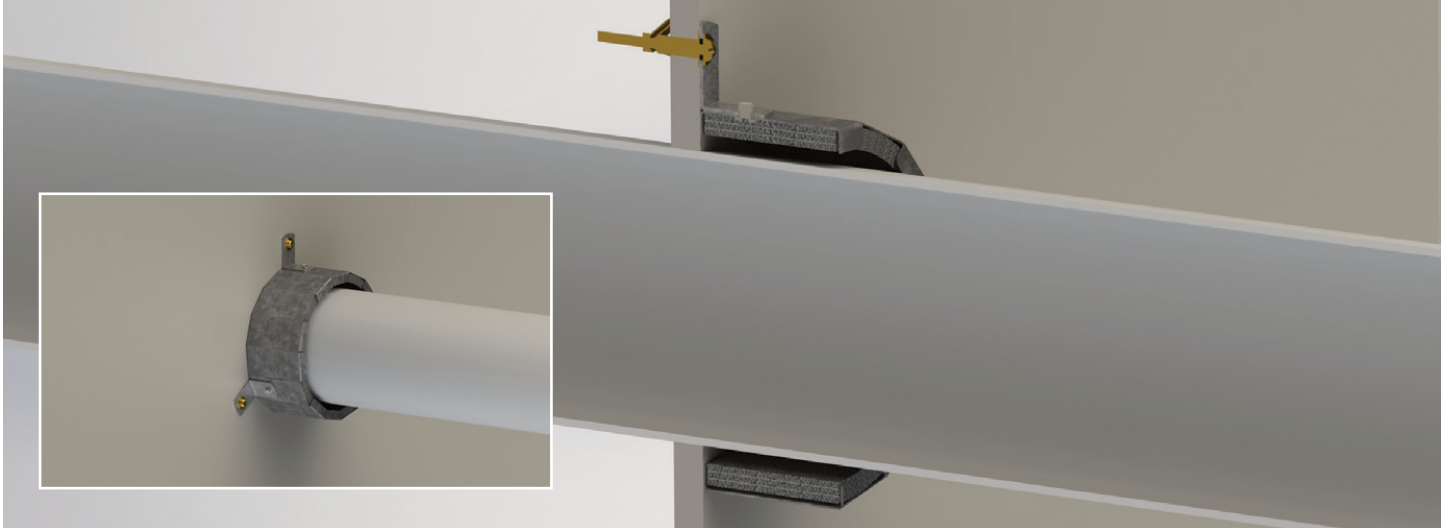
Code	Size	Qty
22GAS50	32-50mm	5



Code	Size	Qty
22GAS63	63mm	1

It is the responsibility of the installer & relevant certifying parties to ensure compliance for each application.
For specific product details please contact Drillfast. E&OE

INSTALLATION FEATURES



Retrofit collars are usually installed after the substrate, such as a wall or floor, has been constructed. When installing these collars, it is important to remember that they are installed correctly. Remember:

- Check the collar has been approved on the matching substrate and application
- Check that the service type and penetration size has also been tested/approved in this application
- Ensure the correct fixings are used for installation. There are many types of substrates & fixings
- Ensure that the correct fire rated mastic is used on relevant installations for a fully compliant system
- Ensure installation and compliant using qualified certifiers

To support the installation, correct documentation is just as critical as the correct installation. Reference documentation may include Test Reports, Test Assessments and Fire Engineering Reports to just name a few. Subject to specific project requirements, you should always make sure you have the most current and up-to-date supporting documentation.

Due to the many variables with testing and installing retrofit collars the Australian Standard AS1530.4:2014 says, "All Fire Resistance Levels (FRLs) achieved on framed plasterboard wall systems are applicable to concrete and masonry wall of equal or greater thickness" (AS1530.4:2014 Section 10.12.2 (c)).



Australian made



Compliant



NCC 2022 ready



Project ready



Customisable



Installer friendly